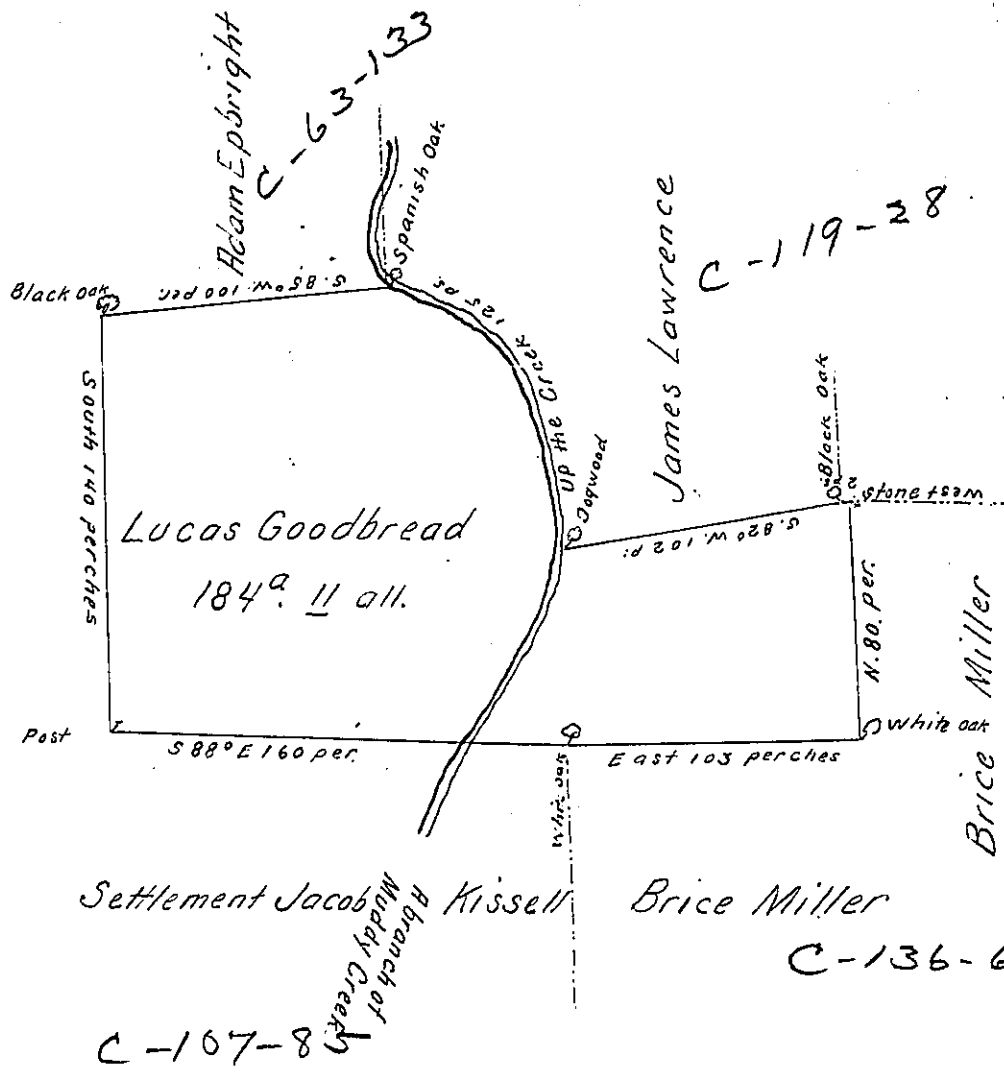


C-200-137
Shanklin

Improvement Widow



Settlement Jacob Kissell
C-107-8

Brice Miller
C-136-67

By Virtue of a Warrant from the Proprietor Dated the 15th Day of January Anne Dorn
1736. The Above Described Tract of Land Was Surveyed unto Lucas Goodbread
^{formerly}
^{now in Brecknock}
in Erle Township in Lancaster County. Beginning at a Spanish Oak by a Branch of
Muddy Creek. Thence South 85 Degrees West by George Adam Epbright 100 perches
to a Black Oak. Thence South by ye Improvement of the Widow Shanklin 140 perches
to a Post. Thence South 88 Degrees East by Jacob Kissell 160 perches to a White
Oak. Thence East by Brice Miller 103 perches to a White Oak. Thence North by
ye Same 80 perches to a Stone. thence West by Vact. Land 2 perches to a Black
Oak. Thence South 82 Degrees West by James Lawrence 102 perches to a Dog-
wood Tree by the Said Branch. Thence up the Same on the Several Courses 125
perches to ye place of Beginning. Containing One Hundred & Eighty Four Acres beside
the Allowance of Six p. Cent.

31st 1st M^o 1739

Sam^l Lightfoot

IN TESTIMONY that the above is a copy of the original remaining on file in
the Department of Internal Affairs of Pennsylvania, made
conformably to an Act of Assembly approved the 16th day of
February, 1833, I have hereunto set my Hand and caused
the Seal of said Department to be affixed at Harrisburg,
this twenty eighth day of November 1904

James P. Brown
Secretary of Internal Affairs.